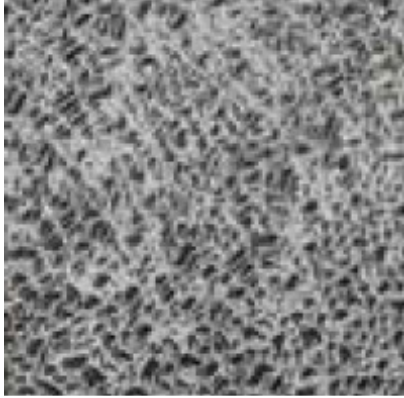


## PLAZCRYL R7000-I – CRACKED ICE - DATA SHEET



### ACRYLIC SHEETS WITH ONE SIDE CRACKED ICE EMBOSSED PATTERN

Available in 1500 mm width  
2.5-5.0 mm thickness

	TEST METHOD	TEST METHOD	SI UNITS	RESULT
General Properties	ASTM	ISO		
Density	D 792	R 1183	g/cm <sup>3</sup>	1.19
Total Light Transmission (3mm sheet)	D1003		%	90
Flammability	UL/94		class	HB
Mechanical Properties				
Tensile Strength	D 638	R 527	MPa	68
Modulus of Elasticity	D 638	R 527	MPa	3562
Elongation at Break	D 638	R 527	%	3.5
Flexural Modulus	D 790	R 178	MPa	3420
Flexural Strength	D 790	R 178	MPa	112
Rockwell Hardness	D 785		M-scale	95
Izod Impact Strength (notched)		R180 a	KJ/m <sup>2</sup>	1.5
Thermal Properties				
Heat Deflection Temperature (1.8 MPa)	D 648	R 75	°C	95
Coefficient of Linear Thermal Expansion (0-50°C)	D 696	parallel	1/°C	6.5E-5
Vicat Softening Temperature (50°C/h 50N)	D 1525	R 306	°C	103

Technical values given in this table are typical values for your guidance, measured in flat, solid PMMA sheets. They are not to be taken as specifications and are subject to certain variability.

All information, recommendations or technical advice given in datasheet, is given in good faith, to the best of our knowledge and based on our present experience and procedures. However, no liability or other legal responsibility is assumed for the full adequacy, accuracy or completeness of this information. We reserve the right to make any changes, according to technological progress and further developments. The customer is not released from the obligation to conduct careful inspection and testing of incoming goods.

Product design using Plazcryl sheets must be carried out only by qualified experts in the sole responsibility of the customer. Performance should be verified by testing, carried out only by qualified experts in the sole responsibility of the customer.